



# YOUNG

CONDOS AT CITY CENTRE

# GUSTO (1-H)

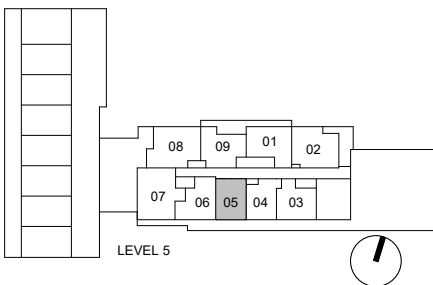
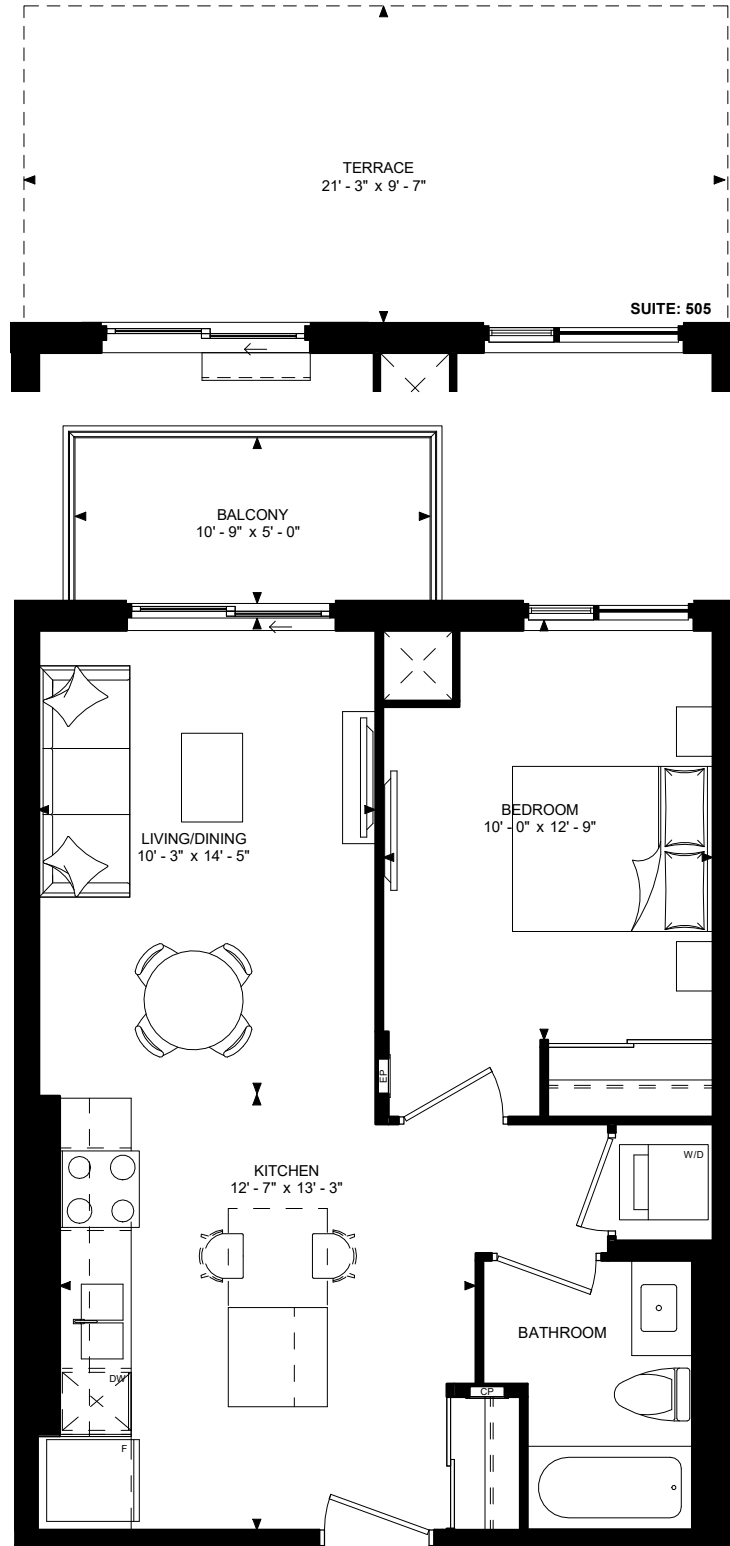
675 TOTAL SQ. FT.

1 BEDROOM

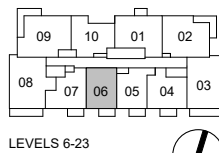
613 SQ. FT. OF INDOOR SPACE

62 SQ. FT. OF BALCONY SPACE

204 SQ. FT. OF TERRACE SPACE



LEVEL 5



LEVELS 6-23

This plan is not to scale and subject to architectural review and revision including without limitation, the Unit being constructed with a layout that is the reverse of that set out above. All materials, specifications, details and dimensions, if any, are approximate and subject to change without notice in order to comply with building site conditions and municipal, structural, Vendor and/or architectural requirements. Actual floor area may vary in accordance with Bulletin 22 published by the Tarion Warranty Corporation. Location of structural and mechanical elements may vary from what is shown. Bulkheads are not shown on this plan and may be located in areas of the Unit as required to provide venting and mechanical systems. Balconies, Terraces and Patios if any are exclusive use common elements, shown for display purposes only and location and size are subject to change without notice. Window location, size and type may vary without notice. Suites sold unfurnished. QAL201809171FS 20180921 E. & O.E.

