



YOUNG

CONDOS AT CITY CENTRE

SPIRIT (2-A)

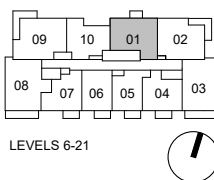
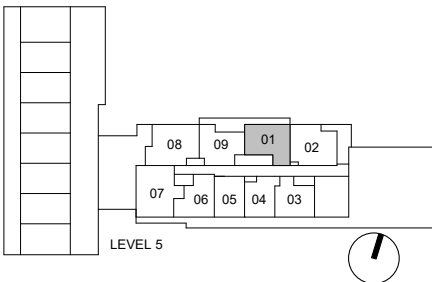
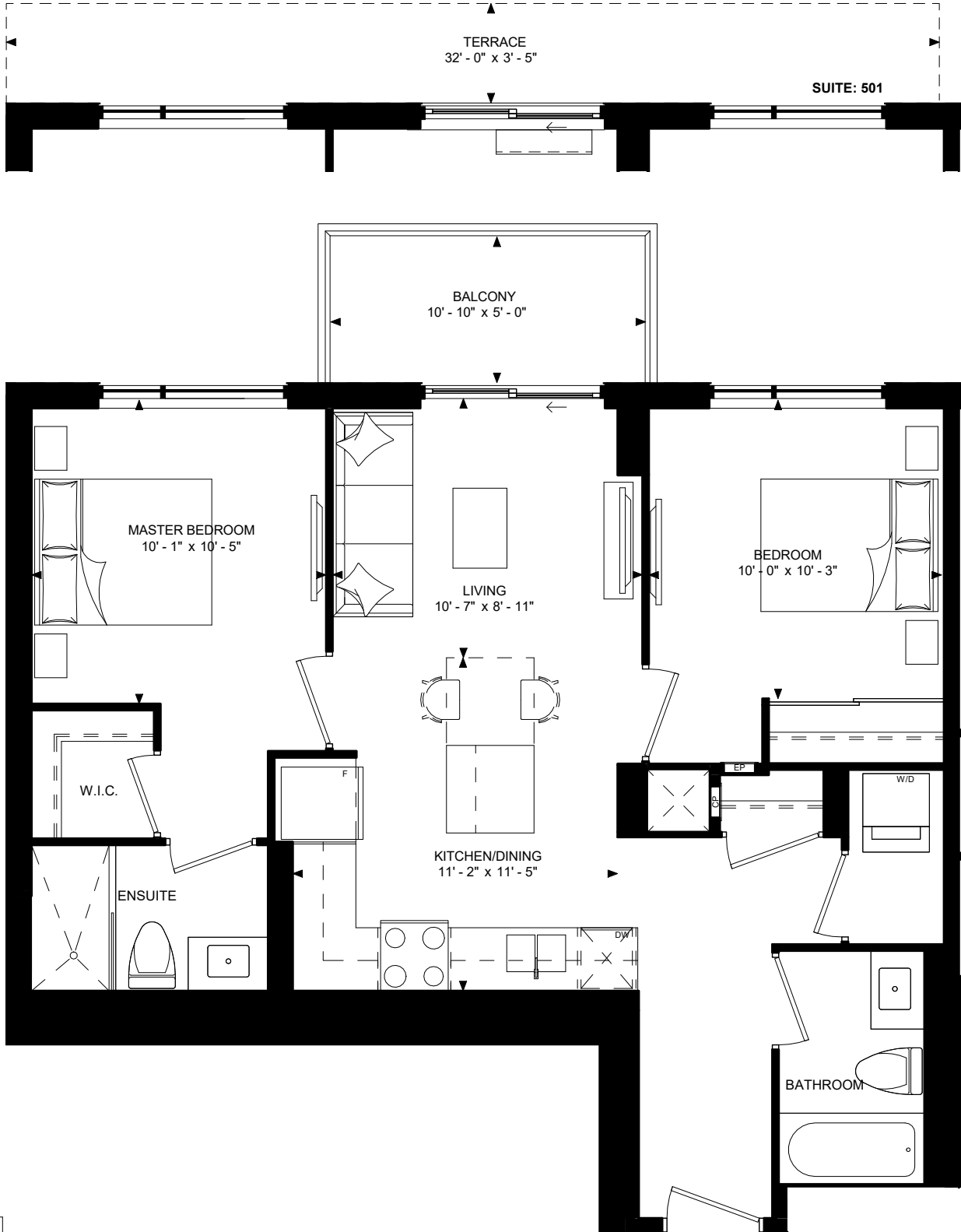
863 TOTAL SQ. FT.

2 BEDROOM

801 SQ. FT. OF INDOOR SPACE

62 SQ. FT. OF BALCONY SPACE

120 SQ. FT. OF TERRACE SPACE



This plan is not to scale and subject to architectural review and revision including without limitation, the Unit being constructed with a layout that is the reverse of that set out above. All materials, specifications, details and dimensions, if any, are approximate and subject to change without notice in order to comply with building site conditions and municipal, structural, Vendor and/or architectural requirements. Actual usable floor area may vary from the stated floor area in accordance with the Floor Area Calculations Directive dated February 1, 2021 published by the Housing Construction Regulatory Authority. Location of structural and mechanical elements may vary from what is shown. Bulkheads are not shown on this plan and may be located in areas of the Unit as required to provide venting and mechanical systems. Balconies, Terraces and Patios if any are exclusive use common elements, shown for display purposes only and location and size are subject to change without notice. Window location, size and type may vary without notice. Suites sold unfurnished. QAL201809171FS 20200202 E. & O.E.

